

**Customer and Communities Improvement Fund (CCIF)
2025/26**

Interim report – November 2025

Step -

- favourite part is people turning up and people might be anxious or unsure. Sometimes they haven't cycled before. Once we get them settled and on the right cycle and into the forest the smiles come out and it's great to share my passion for cycling.

Having this opportunity has been great for my personal development being able to have my first paid job. I love to be able to do my favourite activity and enable others too to do so!



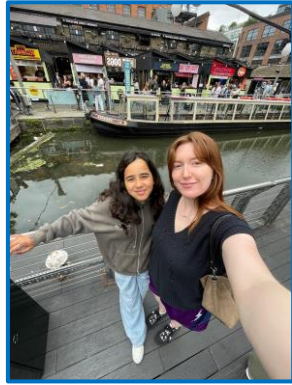
Stef is funded by SWR to work with CCIF-backed project, PEDALL



Challengers: Disabled young people enjoying their summer programme

Contents

Welcome	2
Advocacy in Refuge	3
Cranbrook Community Crossing	4
Dancing Books	5
Flourish.....	6
Future Creators: Creative Skills for Employability	7
Guildford Youth scheme Summer Project for Disabled Young People	8
Identify You Creative Programme (IYCP)	9
ISVA Outreach Service	10
Platform Rail Education Scheme.....	11
Parenting Workshops for Refugee Families.....	12
PEDALL Inclusive Cycling in the New Forest	13
Senior Saints.....	14
Station Building Rescue.....	15
Super Sensory Kids.....	16
The Kids Network Lambeth Mentoring Scheme	17
Young Cultural Changemakers	18
Youth Outreach and Mentoring.....	19
Youth Outreach Worker Pilot	20
Warminster Detached Youth Work 2025/26.....	21
The figures.....	22



Children from the Kids Network enjoying time with their mentors

Welcome

"She is my favourite part of the day each Wednesday. She gives me power. She is fun. She is the thing that makes me always happy" – Samera age 10*

This wonderful quote, from a youngster on a mentoring scheme in Lambeth, London, is just one of many moving testimonials from the 19 projects supported by the Customer and Communities Improvement Fund (CCIF) funded by SWR in 2025/26.

This report provides a snapshot overview of the last six months, from April 2025 to September 2025, the facts, figures and achievements. But it is the words and pictures of the people we're helping, the lives enriched and transformed, that really tell the story.

Our programme supports projects that have a community benefit, that address an area of social need, and that educate and engage with residents in areas in and around our network. Applications were assessed and reviewed by SWR alongside independent observers. Shortlisted schemes were then sent for approval to the Department for Transport.

As we meet the projects, we gain a deeper understanding of the work they do and are developing close and lasting relationships with the organisations we support. It is both a privilege and a joy to visit the projects and meet the extraordinary people involved, the passion that goes into it and to appreciate the profound difference they are making to individuals and communities in and around the SWR network.

Already we are seeing exciting and unexpected outcomes which we are happy to share and we look forward to producing a final report at the end of the year. There may not be time to read the full report, but it's worth taking a moment to browse the inspirational quotes and smiling faces. They offer a glimpse into the human-scale social value being created and the lives being changed.

From the CCIF team.



I Choose Freedom is a charity that provides refuge a path to freedom for survivors of domestic abuse.

www.ichoosefreedom.co.uk

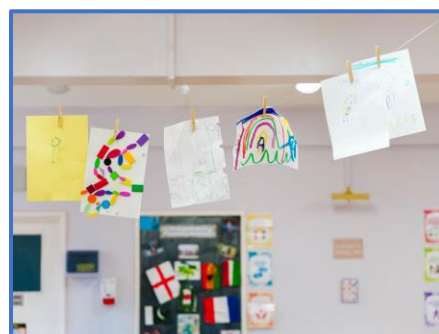
CCIF award: £22,897 plus £8,500 in match funding.

Advocacy in Refuge

The funding is supporting an Advocacy Project. An Advocate's work starts at referral, getting survivors safely to refuge. They take a needs-led tailored approach with safeguarding and managing risk as their priority, ensuring survivors and children remain safe.

Achievements and progress over last six months:

- 1:1 meetings with survivors providing tailored support.
- Weekly group meetings for residents at the refuge.
- Counselling for survivors as they start to tackle living a new life.
- Four new families have moved into refuge and are being supported.
- Within refuge, survivors meet with their dedicated Advocate daily when they first move in.



Plans for the next six months:

- Launch of a new Freedom Programme.
- The refuge is beginning to prepare for Christmas, including a Christmas Wishlist to ensure all adults and children at their sites receive gifts they love.

Feedback

"When I arrived at the refuge I was frightened and uncertain about my future. I had no idea where I was going or what to expect. Meeting [my Advocate] changed everything. Her warmth and kindness put me at ease. She took me to a place I never imagined. A beautiful welcoming environment complete with a welcome pack and all the necessities I needed. In that moment I was overwhelmed with emotion."

"Every member of the I Choose Freedom team was incredibly supportive. The refuge became my home when I had nowhere else to go. And now after overcoming those difficult times, I have regained my independence, secured my job again, and feel free once more."





National Trust

National Trust

Specifically the National Trust property at Killerton in Devon.
www.nationaltrust.org.uk/visitdevon/killerton

CCIF award: £42,000 plus £10,000 in match funding.

Cranbrook Community Crossing

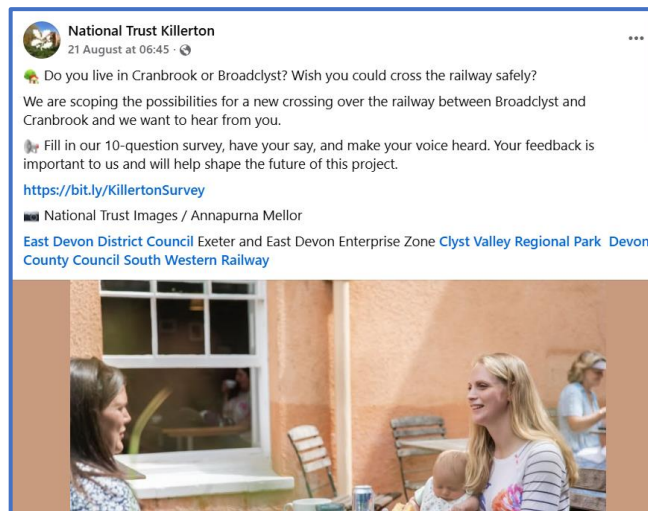
The funding has been awarded to deliver a feasibility study for the construction of a bridge and multi-use trail, including community consultation.

Achievements and progress over last six months:

- SLC Rail appointed as contractor to manage the study.
- Client Objectives Specification and appraisal criteria completed.
- Events held for local people to respond in person to the public survey.
- 430 responses to the public survey received.

Plans for the next six months:

- On-going research and reporting back to SWR.



DANCEWEST.

Dance West engages with people of all ages and abilities to provide high quality dance activities. The aim is to improve the mental and physical health of all people. Dance West believe that dance is the catalyst for positive change in our communities.

www.dancewest.co.uk

CCIF award: £42,255

Dancing Books

Dance West have created a new project, Dancing Books. Dancing Books uses dance and storytelling to enhance language development and literacy in pre-school-aged children and their families. This grant is funding free sessions in libraries, designed to be welcoming, accessible and tailored to the needs of low-income and EAL (English as an Additional Language) families.

Achievements and progress over last six months:

- Engaging with local families, arranging dates and locations with local libraries.

Plans for the next six months:

- There are plans for one of the Community Rail Partnerships to meet with Dance West and arrange for families to have a Try the Train experience with SWR. Ideas include entertaining passengers on the train with dance, art work at stations, and station adoption.





Oasis Church Southampton is an inclusive and progressive church based in a former chemist.

www.oasischurchsouthampton.org

CCIF award: £19,000 plus £184,145 in match funding.

Flourish

Flourish offers a specialist Alternate Education Provision for 12–16-year-olds with a vocational focus on Catering and Hospitality. Funding from CCIF for this project provides capital investment to equip a newly fitted kitchen with catering facilities to make and serve stone baked pizzas to customers daily.

Achievements and progress over last six months:

- Renovations underway.
- Community engagement to invite young people along to participate in the project.

Plans for the next six months:

- Complete building renovations.
- Taster sessions for schools during November and December.



Find Your Feet Careers & Enterprises CIC is a London-based social enterprise on a mission to empower underrepresented communities to build the skills, confidence and connections they need to thrive. Since 2020, they have supported over 1,200 people including NEET (Not in Education, Employment or Training) young people, ‘Global Majority’ communities, women, girls, and career changers through creative and digital programmes, employability training and entrepreneurial development.

www.findyourfeetcic.org.uk

CCIF award: £20,000 plus £2,300 in match funding.

Future Creators: Creative Skills for Employability

The grant is funding workshops, certifications and community events, ensuring accessibility, measurable outcomes and creating a long-term reduction in unemployment and social exclusion. Through this initiative, SWR communities are benefiting from reduced anti-social behaviour, improved economic resilience, and enhanced social cohesion.

Achievements and progress over last six months:

Since launching delivery in April 2025, they have successfully engaged over 70 individuals through a combination of:

- Creative and digital taster workshops (delivered in and around Lambeth, engaging residents from areas close to Vauxhall, Clapham Junction, and West Norwood stations).
- Targeted outreach and triage support, prioritising those most vulnerable
- And engagement channels (comms, webinars and social media) to provide more access.

They have worked closely with local partners including Lambeth Council, GLA networks, and community housing providers to reach the right participants and ensure safe, supported engagement.

Plans for the next six months:

- There will be a 2-week intensive Creative & Digital Employability Bootcamp will commence in late November, with 30 spaces for participants. Thanks to our phased outreach model, many of these individuals have already participated in early-stage workshops meaning they are entering the bootcamp with stronger engagement and continuity of support.

Feedback:

“FYF sessions are engaging and practical – I’ve already started applying what I have learnt to my current work” – Loay

Challengers

Challengers breaks down the barriers to inclusion and make it possible for every disabled child and young person to play and have fun, without limits.

<https://disability-challengers.org/>

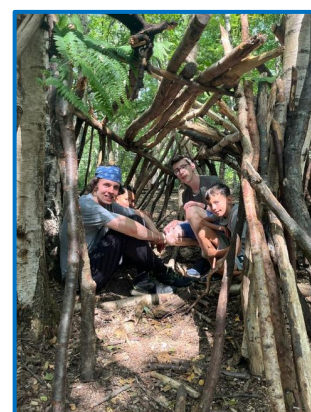
CCIF award: £26,866 plus £20,447 in match funding.

Guildford Youth scheme Summer Project for Disabled Young People

The funding is enabling Challengers to offer a summer project which allows disabled young people aged 11-18 to enjoy leisure and social opportunities that they are often excluded from by mainstream providers.

Achievements and progress over last six months:

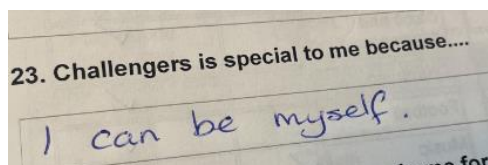
- During the summer holidays Guildford Youth ran 15 sessions. There were trips and activities including dance, drumming workshops, theme park visits and shopping trips.
- This project also had a wider impact on the parents, carers, and siblings of the young people who attended, giving them an opportunity to have a short break from their demanding caring responsibilities.



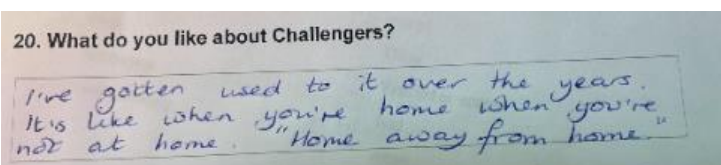
Plans for the next six months:

- Fundraising events at SWR stations and supporting Try the Train events – building confidence for challengers.

“What an incredible summer we’ve had at Challengers Guildford Youth scheme! We are so grateful to South Western Railway for supporting our work to provide inclusive leisure and social opportunities for disabled young people, aged 13-18. Over the summer holidays, we welcomed 59 young people, 37 of whom required 1-1 or 2-1 support from our dedicated youth workers due to the complexity of their needs. For many of the young people who attended, Challengers was their only opportunity to access leisure opportunities or see friends during the summer holidays.”



“I can be myself.”



“I’ve gotten used to it over the years. It’s like when you’re home when you’re not at home. Home away from home.”



Trash Gxng Academy C.I.C. transforms the lives of underrepresented young people by breaking barriers through their core creative programme.

www.trashgxng.co.uk

CCIF award: £20,000 plus £5,000 in match funding.

Identify You Creative Programme (IYCP)

The project offers a 12-week co-design skills programme to increase confidence and direction for underrepresented NEET (Not in Education, Employment or Training) young people in Lambeth.

Achievements and progress over last six months:

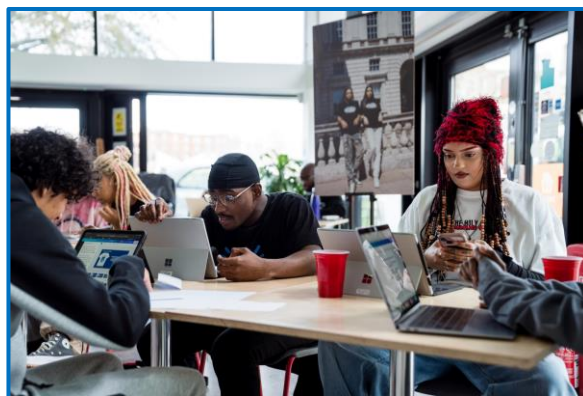
- Leveraging partnerships with DWP to recruit relevant young people.
- Visiting venues to host the programme and creating a pipeline of corporate partners

Plans for the next six months:

- Workshops for young people who have been selected to participate in the programme.

Building the relationship:

Bernadette Miamo (SWR employee – Safety team) will be meeting the team at Trash Gxng Academy and support the project. SWR Training department are also in touch with them to offer workshops in interview skills and CV writing. At the end of the project, a judging panel including a representative from SWR will give awards to some of the young people.





RASASC Guildford Limited (Rape and Sexual Abuse Support Centre – Surrey) is an inclusive service that supports survivors of all genders over the age of 13 from across Surrey, who have been raped, sexually abused or have had an unwanted sexual experience. They aim to help survivors overcome the abuse they have experienced and rebuild their lives.

www.rasasc.org

CCIF award: £44,962 plus £10,000 in match funding.

ISVA Outreach Service

The grant has increased access to trauma-informed services by bringing ISVA (Independent Sexual Violence Advisor) support into trusted local spaces. The aim to support at least 50 survivors during the year through community and mobile ISVA clinics. As a result of this project, RASASC hopes to see longer-term benefits for both survivors and the wider Guildford and Woking communities

Achievements and progress over last six months:

- A presentation to the Adolescence Service Team.
- One Stop Drop In Service NSDAS (North Surrey Domestic Abuse Service).
- Attendance at PRIDE Guildford.
- Regular attendance at Guildford Action.
- Breakfast meeting at the Women's Support Centre.
- Attendance at Freshers Fair, Surrey University.

Plans for the next six months:

- Planning for a meeting with Samaritans Guildford.
- Liaise with SWR to introduce their services at railway stations.



Feedback:

"Thank you so much you don't realise how much just being able to speak to you about anything helps."

"During our conversation today, I saw glimpses of my future self, a healed and blooming version of myself. It has made me so excited to be able to put this all behind me and be able to start the next chapter."

Platform

Platform is a rail education scheme working with schools to empower young people in accessing the railways through workshops, rail familiarisation trips and bespoke locally themed resources.

<https://platformrail.org/>

CCIF award: £16,119 plus £961 in match funding.

Platform Rail Education Scheme

Platform is travelling around the SWR network in 4 targeted locations: Dorchester, Salisbury, Weymouth and Yeovil. This grant helps deliver a programme for students in specifically targeted schools, in neighbourhoods scoring highly on indices of deprivation, lack of access to a car and low social mobility, and/or a high number of pupils with special educational needs or disabilities who may not consider public transport an option.

Achievements and progress over last six months:

- Marketing for workshops and rail familiarisation visits to be delivered.
- Working with the local Community Rail Partnerships leaflets are being produced to encourage families to travel by rail.

Plans for the next six months:

- Engage with schools to deliver educational workshops and Try the Trains.
- Produce family-friendly leaflets on how to enjoy the local areas by train.

Building the relationship:

SWR will support Try the Trains with students to increase their confidence on the railway.





Katherine Low Settlement is committed to building stronger communities and enabling people to challenge themselves and find ways out of isolation through their varied community projects. Their core programmes support older people, children, young people and their families from refugee backgrounds and newly-arrived adults learning English. www.klsettlement.org.uk/

CCIF award: £13,371 plus £1,800 in match funding.

Parenting Workshops for Refugee Families

Katherine Low Settlement is working in partnership with training group Elev8ed CIC to deliver their internationally approved Triple P Course, focusing on self-care and parenting skills to break generational trauma cycles. This is complemented by sessions on supporting teens, SEN diagnosis, GCSE choices, and reading with children.

Achievements and progress over last six months:

- Engaging with a provider to deliver training.
- Identifying families who suffered from transgenerational trauma.

Plans for the next six months:

- 2 x weekly 3-hour parent workshops for parents from refugee backgrounds.
- Workshops focusing on parents of children aged 11+ and a second course for parents of primary aged children.

Feedback (from a previous course):

"I didn't think the course was going to be for me because I speak little English, but I really liked it and I know it is going to help me understand my son, because he is living in a different culture and country to me and sometimes I don't understand him. I like being with other mothers from different cultures, we can support and understand each other."





PEDALL Ashurst Community Hub is about connection through cycling. Bonds form between families and some of the others who cycle with them because people are going through some of the same challenges. People talk to each other through meeting at PEDALL.

www.pedall.org.uk

CCIF award: £13,500 plus £65,000 in match funding.

PEDALL Inclusive Cycling in the New Forest

The funding has enabled PEDALL to launch a new, pilot initiative in partnership with Minstead Trust, to offer part-time employment for individuals with lived experience and/or learning disabilities. By offering employment opportunity, PEDALL is adding to its inclusivity credentials, while the additional-needs community lies at the heart of the project.

Achievements and progress over last six months:

- Recruited new team members. Those selected have 'lived experience' and are on a supported employment/mentoring contract.
- Lots of courses and events. There has been a fundraising event attended by Lucy Lomax – one of the SWR team who had a turn on a bike and raised awareness of SWR.

Plans for the next six months:

- Ongoing support for the two new team members and for the well-attended courses.

Building relationships:

SWR are exploring encouraging groups from a wider range of places to come by train and take advantage of this programme.

Feedback:

"The social side of the cycling helped them to create friendships that they would not normally form and brought this confidence into school and classrooms. Parents noticed changes at home, the confidence and positivity shone through, and we had many parents calling to tell us about it."

"Most students didn't know how to ride a bike at the start of the course and all of them improved massively. This is crucial for their physical and mental health. Students learnt how close the New Forest is and all it can offer outside school, for them and their families."



**SAINTS
FOUNDATION**



Saints Foundation - Senior Saints strives to help over 60s improve their lifestyle and maintain their independence through a mixture of physical exercise and social activities. www.southamptonfc.com/en/saints-foundation-senior-saints
CCIF award: £60,000 plus £124,828 in match funding.

Senior Saints

Senior Saints reaches out to people based in areas of highest need in the Southampton area. The CCIF funding supports one of hubs in the city where people join weekly activities. The hubs are designed to improve physical health, introduce new skills and create friendships along the way. There are exercises to fit all abilities, a team is on hand to provide help and expertise. The funding also supports groups to Try the Train. Previous trips from funding have seen positive results for community strengthening and reducing social isolation.

Achievements and progress over last six months:

- Since August the project has run 21 weekly sessions engaging with 75 older adults.
- Ran 2 workshops: cooking safety focusing on the theme of 'turn off the heat while you eat' delivered by Hampshire Fire & Rescue Service. And a local GP practice has conducted blood pressure checks for early identification of health concerns.

Plans for the next six months:

- New workshops delivered by partners.
- The Try the Train trips are being planned for the next few months. This involved consulting with the people who attend the hub activities.

Building relationships:

SWR has a strong ongoing relationship with Senior Saints. There are Try the Train trips, activities and also a local group who have now adopted Southampton Station.

Feedback:

"It has got me more fit and active, plus I have made new friends and more social connections."

"I have made new friends; exercise has also helped my health conditions".



Blackmore Vale Line Community Rail Partnership

Blackmore Vale Line Community Rail Partnership is a Department of Transport accredited regional partnership based in the west country and made up of local people, station groups, statutory and voluntary organisation and businesses.

<https://www.blackmorevaletrains.com/>

CCIF award: £37,600 plus £2,500 in match funding.

Station Building Rescue

Research to inform the development of a community hub in Sherborne. Sherborne has identified the need for a community hub. The community feels the station house is ideally located for this facility which could include a community office, tourism hub and family hub.

Achievements and progress over last six months:

- Commissioned CFP architects to do a first feasibility design and costings. This is complete and has been shared with partners.
- Council, local town organisations, the Railway Heritage Trust and the local café owner have been involved in the first phase.

Plans for the next six months:

- After the initial consultation, the next stage is to put together the funding package to deliver the scheme.





Mustard Seed Autism Trust is a registered charity providing support to autistic children, their parents and siblings. Their mission is to equip children, empower parents and educate society so that together they can build a more understanding world.

<https://mustardseedautism.co.uk/>

CCIF award: £10,000 plus £10,000 in match funding.

Super Sensory Kids

Super Sensory Kids project provides specialist occupational therapy to support autistic children with sensory processing and motor skills difficulties. This project supports around 70 autistic children aged between 4-11 years old. Each child receives weekly one-hour sessions for 6 weeks.

Achievements and progress over last six months:

- The project is underway with a waiting list open for new referrals – 52 families have been selected to participate in the programme.

Plans for the next six months:

- To support the children who have been selected to participate in the programme.

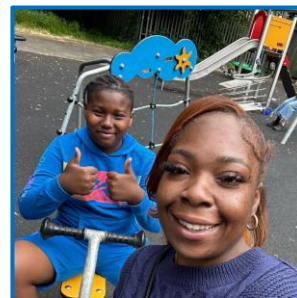
Feedback:

"I'm so grateful for the support for my son who struggles every day with sensory & physical differences but already the suggestions are helping him feel calmer & able to go about his day, thank you!"

"Our Occupational Therapist was brilliant. The time and effort she took to understand my son's needs was amazing. She helped me understand my child's needs more as well as helping my child understand his needs. Home is a lot calmer, he's more regulated at school so I can't thank her enough."

"The help and advice from George (Occupational Therapist) has been invaluable to our family in understanding how we can help but also how he can help to regulate himself. The insight that I gained from George has had the most impact of any other single input."

Mustard Seed Autism Trust does not provide images of this project out of respect for the families involved



The Kids Network addresses a critical gap in early intervention mental health support for Little Londoners, providing a year-long programme of one-to-one mentoring for children aged 8-11 facing significant adversity. The programme gives these young people a chance to be heard.

www.thekidsnetwork.org.uk

CCIF award: £20,000 plus £65,000 match funding.

The Kids Network Lambeth Mentoring Scheme

The grant supports a Lambeth Mentoring Programme, enabling 40 new children to benefit from their expertise which can help transform their lives working with newly trained volunteer mentors over 12 months.

Achievements and progress over last six months:

- Partnered with seven Primary Schools in Lambeth.
- Supported 26 children aged 8-11 with one-to-one mentoring sessions.
- Onboarded four additional children who are awaiting mentor allocation and matching.
- Allocated mentors to seven children who are awaiting induction before matchings.
- Reached a total of 37 children aged 8-11 facing adversity across Lambeth.

Plans for the next six months:

- Volunteer mentors will continue to provide weekly one-to-one mentoring sessions for their mentee out in Lambeth. The Programme Manager working in the borough will continue to provide support to mentees, mentors, schools and caregivers.

Building the relationship:

The Kids Network Lambeth Mentoring Scheme have found ways to get SWR involved and will build an ongoing partnership, Ways that are being explored include:

- Sharing volunteering opportunities with SWR staff.
- Volunteering sign-up and donation links in SWR magazines/flyers.

Feedback:

"She is my favourite part of the day each Wednesday. She gives me power. She is fun. She is the thing that makes me always happy." – Samera, age 10*

"It's been the most meaningful experience I have ever done up until now in life. It's a very valuable experience for us, it's a two-way street. I think that's enough. It just helps you fill your life with meaning." – Arda, Mentor



Artswork is a youth-centred charity working to improve lives through the power of creativity and youth voice, with more than 30 years' experience empowering children and young people through arts and culture.

<https://artswork.org.uk>

CCIF award: £10,000 plus £5,000 in match funding.

Young Cultural Changemakers

This project aims to make Sandown Station feel more welcoming and safer. It will reduce incidence of ASB/criminal damage by empowering young people who have offended/are at risk of offending to co-create work with professional creatives that will give them and other young people a sense of ownership and pride in the station and make it a better place for the whole community.

Achievements and progress over last six months:

- Commissioning artists and getting permission for a mural at Sandown station, on the theme of 200 years of transportation and community cohesion.
- Following an open call-out for artists, a Dragons Den selection session was held at Lionheart School (pupil referral unit) where two professional artists pitched their ideas to students.
- Agreed dates with the Youth Justice Service for weekly workshops.

Plans for the next six months:

- Community Murals IOW will run regular workshops with children from YJS. These sessions will develop the design of the mural to make the underpass at Los Altos more welcoming.
- An artist will be appointed and co-creation workshops with students will begin. This 12-week project will be youth-led, with the artist looking for opportunities to engage the students in decision-making and leadership roles and the reflecting on 200 years of train travel and its impact on the community and environment of Sandown in particular, and the Isle of Wight in general.
- At least two of the workshops will be intergenerational/reminiscence workshops with older people. The outcome from this strand will contribute to the wider project aimed at reducing antisocial behaviour at Sandown Station and making it feel like a safer space for the whole community.
- Some of the young people involved with this project have never left the Isle of Wight. SWR are planning to showcase some of their work at different stations on the mainland (Petersfield and Havant) – The group would be taken on a trip to see their work displayed.



Oasis Hub Mayfield believes everyone should be able to reach their full potential. Oasis Hub does what they can to enable this. They deliver and host a range of community and youth projects. They create a community where everyone is included, where everyone is valued, where everyone thrives and enjoys life in all its fullness.

<https://oasiseastsouthampton.org>

CCIF award: £34,289 plus £29,000 in match funding.

Youth Outreach and Mentoring

Targeting high risk groups, working in areas identified by the police, the project delivers detached and club-based youth work using a converted youth van. It works with young people to build confidence and independence, raising aspirations and wellbeing through mentoring.

Achievements and progress over last six months:

- Throughout July and August 2025, 463 people took part in activities including the Saints Kick Sessions, a Saturday club at Oasis Mayfield, a youth club at Harefield for three weeks in July and a one-off Fun Day at the start of the Summer Holidays.

Plans for the next six months:

- Weekly delivery of detached youth work sessions
- Weekly youth club session at Harefield Hub.
- Weekly Saturday Club session at Oasis Mayfield.
- Recruit mentors to deliver sessions in two secondary academies.

Feedback:

The Leisure Manager at Oasis Mayfield says his team find the sessions much easier to have on site since the start of the youth worker's presence. For the first time, he has not had to check CCTV over the summer to follow up on reports of anti-social behavior on site.



South Bank Business Improvement District improves the management of South Bank in the face of increasing footfall and falling public spending. One key role is to support local communities. Working in partnership with groups such as Railway Children, South Bank Bid has set up a Safeguarding Action Group at Waterloo station.

<https://southbankbid.co.uk/>

CCIF award: £63,255 plus £26,780 in match funding.

Youth Outreach Worker Pilot

South Bank Bid has been awarded funding to deliver a 12-month Youth Outreach pilot in and around Waterloo station. The award will support a full-time worker who will identify and safeguard young people under the age of 18, who are missing from home, rough sleeping and at risk of criminal or sexual exploitation.

Achievements and progress over last six months:

- The new youth outreach worker started her role in September.
- Stakeholder engagement activities began ahead of the official start date, ensuring early momentum.
- Introductory meetings held with key partners, including British Transport Police, Railway Children & Lambeth youth outreach.

Plans for the next six months:

- Joint patrols with South Bank Patrol and BTP.
- Meeting with Network Rail to promote awareness of the project.
- The youth outreach worker will join the Safeguarding action group of Waterloo Station.

Feedback:

The project has been extremely well received, particularly by members of the British Transport Police.

Waterloo Commander, Alexandra Yates, has expressed strong enthusiasm and commitment to the initiative. She has appointed a Single Point of Contact (SPOC) to support Nichola Makin (the new outreach worker) and facilitate collaboration. Commander Yates looks forward to developing a dedicated joint working relationship as the project progresses.





Wiltshire Area Youth Service offers 1-2-1 support for young people, signposting to different services helping with issues with school and help with getting support required for SEND.

CCIF award: £11,552 plus £11,552 in match funding.

Warminster Detached Youth Work 2025/26

This project is being funded to deliver four two-hour sessions each week which support young people and helps reduce youth anti-social behaviour in Warminster. The service works with local schools, the youth probation service, social services and the local policing team. The project will ensure that young people receive the support they need to stop offending/re-offending, and to stop exploitation and serious crime

Achievements:

- Students who are in need of support are now engaging with mentors weekly.

Plans for future:

- The support will continue.

Feedback:

"I look forward to coming and am able to discuss feelings of anger. Beth can really get help to support me"

"If I didn't have you school would be harder."

"Beth's work and her team has absolutely transformed the mentoring programme in the school in supporting the students emotional health"

"The impact on students has been huge, it has transformed so many vulnerable students' outlook towards school."

Wiltshire Area Youth Service does not provide images of this project out of respect for the families involved

The Figures

In addition to the obvious beneficial outcomes of the projects for the individuals and communities being served, project outcomes are also now being measured using industry-recognised social value metrics. The 'units' measure the quantity of each activity (such as weeks of volunteering or hours of mentoring) The metrics have been agreed and are now being submitted quarterly. They are calculated using 'Loop', a social value measurement platform.

These figures are based on activity in the first six months of this CCIF year. We would expect these figures to all be higher by the end of the Railway Year.

Name	Organisation	Station / Region	CCIF Amount	Match Funding	Social value metrics
Youth Outreach and Mentoring	Oasis Hub Mayfield	Southampton / Central	£34,289	£29,000	SV£787
Senior Saints	Saints Foundation	Southampton / Central	£60,000	£124,828	SV£18,1270
PEDALL Inclusive Cycling in the New Forest	Pedall Ashurst Community Hub	Ashurst / Central	£13,500	£65,000	SV£121,944
Identify You Creative Programme (IYCP)	Trash Gxng Academy C.I.C.	Waterloo / Metro	£20,000	£5,000	-
The Kids Network Lambeth Mentoring Scheme	The Kid's Network	Waterloo / Metro	£20,000	£65,000	SV£497,925
Young Cultural Changemakers	Artwork, Charity Number 800143	Sandown / Isle of Wight	£10,000	£5,000	-
Super Sensory Kids	Mustard Seed Autism Trust	Hook / Central	£10,000	£10,000	SV£82,208
Youth Outreach Worker Pilot	South Bank BID	Waterloo / Metro	£63,255	£26,780	-
Advocacy in Refuge	I Choose Freedom	Farnham / Metro	£22,897	£8,500	SV£153,594
ISVA Outreach Service	Rape and Sexual Abuse Support Centre	Guildford / Metro	£44,962	£10,000	-
FLOURISH	Oasis Church Southampton	Southampton / Central	£19,000	£184,145	-
Dancing Books	Dance West	Hounslow / Metro	£42,255	£0	-
Future Creators: Creative Skills for Employability	Find Your Feet Careers & Enterprises CIC	Vauxhall / Metro	£20,000	£2,300	-
Guildford Youth scheme Summer Project for Disabled Young People	Challengers	Guildford / Metro	£26,866	£20,447	SV£11,083
Platform Rail Education Scheme	Platform c/o South Wessex Community Rail Partnership CIC	Weymouth / Western	£16,119	£961	-
Parenting Workshops for Refugee Families	Katherine Low Settlement	Clapham Junction / Metro	£13,371	£1,800	-
Cranbrook Community Crossing	National Trust Places of Holistic Interest or Natural Beauty	Cranbrook / Western	£42,000	£10,000	Sv£1,324
Wiltshire Area Youth Service Detached Youth Work	Wiltshire Area Youth Service	Warminster / Western	£11,552	£11,552	Sv£272.989
Station Building Rescue	Blackmore Vale Line Community Rail Partnership	Sherborne / Western	£37,600	£2,500	-

Looking ahead

We look forward to sharing a final report with you at the end of this year's round of funding. The CCIF team are engaging with other departments within SWR to get staff involved with supporting the projects. SWR will look at raising awareness of the projects with more case studies, visits and videos. There will be a full social value analysis of each project.



The Kids Network



The Kids Network



Platform Rail Education Scheme